

CASTELLA

lookbook



APPLIANCE PULLS AND NEW RELEASES



Appliance Pulls

AND NEW RELEASES

FINE INTERIOR HANDLES

Castella curates a globally sourced collection of sophisticated interior kitchen and cabinetry handles. Interior designers, architects, home builders and renovators will discover a beautiful range accompanied with lifetime guarantee and Castella's signature customer service.

We are proud to present our range of appliance pull handles which have been crafted and curated to complement some of our most popular design ranges.



SCAN TO VIEW
THE CASTELLA
WEBSITE

CASTELLA



MANHATTAN

Page 2



DECADE

Page 8



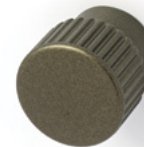
HASTINGS

Page 3



STIRLING

Page 12



SORANO

Page 4



CHELSEA

Page 14



ROMANO

Page 6



NEWPORT

Page 16

MANHATTAN

NEW DESIGN

The Manhattan kitchen cabinet handle, made of solid stainless steel, is a nod to New York's iconic architecture, modernist with its strong lines and flat surfaces. The industrial look and feel is well proportioned, much like the high rise buildings that dominate the Manhattan skyline.

This handle is available in 5 versatile lengths, finished in either classic matt black or stainless steel.



MATT BLACK

MANHATTAN HANDLE

FINISH	CODE	HC	L	W/D	P/H
Matt Black	036.128.04	128mm	138mm	10mm	32mm
Matt Black	036.160.04	160mm	170mm	10mm	32mm
Matt Black	036.224.04	224mm	234mm	10mm	32mm
Matt Black	036.352.04	352mm	362mm	10mm	32mm
Matt Black	036.416.04	416mm	426mm	10mm	32mm
Satin Stainless Steel	036.128.07	128mm	138mm	10mm	32mm
Satin Stainless Steel	036.160.07	160mm	170mm	10mm	32mm
Satin Stainless Steel	036.224.07	224mm	234mm	10mm	32mm
Satin Stainless Steel	036.352.07	352mm	362mm	10mm	32mm
Satin Stainless Steel	036.416.07	416mm	426mm	10mm	32mm

HASTINGS

NEW FINISH

The Hastings collection in solid brass is characterised by its smooth curves, which gives a classic look to cabinetry. We have added the prestigious Aged Brass finish to this range in the 34mm knob (with backplate) and the 96mm cup pull.

The cup pulls are perfect for shaker style drawers, and the knobs can be used with or without the square backplate.

Check out our full catalogue **online** to see the whole Hastings range and all the other 4 finishes.



AGED BRASS

HASTINGS 34MM KNOB ON BACKPLATE

FINISH	CODE	HC	L	W/D	P/H	BACKPLATE
Aged Brass	802.034.46	-	-	34mm	35mm	38x38mm



AGED BRASS

HASTINGS 96MM CUP PULL

FINISH	CODE	HC	L	W/D	P/H
Aged Brass	802.096.46	96mm	108mm	40mm	22mm
Aged Brass	802.203.46	203mm	230mm	40mm	22mm

SORANO

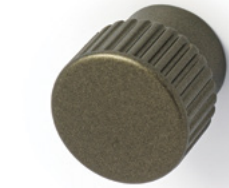
NEW DESIGN

The Italian-made Sorano Cabinet handle by Castella is aesthetic and functional with advanced painted finishes and linear detailing. The cup pull and handle are available in 2 lengths, and a 30mm cone knob and 25mm round knob.



SORANO ROUND KNOB

FINISH	CODE	HC	L	W/D	P/H
Antique Brass	607.025.03	-	-	25mm	25mm
Matt Black	607.025.04	-	-	25mm	25mm
Matt Gold	607.025.39	-	-	25mm	25mm
Bronze Olive	607.025.50	-	-	25mm	25mm



BRONZE OLIVE

SORANO CONE KNOB

FINISH	CODE	HC	L	W/D	P/H
Antique Brass	606.030.03	-	-	30mm	25mm
Matt Black	606.030.04	-	-	30mm	25mm
Matt Gold	606.030.39	-	-	30mm	25mm
Bronze Olive	606.030.50	-	-	30mm	25mm



ANTIQUÉ BRASS



MATT BLACK



SORANO CUP PULL DETAIL

SORANO CUP PULL

FINISH	CODE	HC	L	W/D	P/H
Antique Brass	606.096.03	96mm	126mm	30mm	22mm
Antique Brass	606.160.03	160mm	200mm	36mm	26mm
Matt Black	606.096.04	96mm	126mm	30mm	22mm
Matt Black	606.160.04	160mm	200mm	36mm	26mm
Matt Gold	606.096.39	96mm	126mm	30mm	22mm
Matt Gold	606.160.39	160mm	200mm	36mm	26mm
Bronze Olive	606.096.50	96mm	126mm	30mm	22mm
Bronze Olive	606.160.50	160mm	200mm	36mm	26mm

SORANO HANDLE

FINISH	CODE	HC	L	W/D	P/H
Antique Brass	607.160.03	160mm	169mm	17mm	26mm
Antique Brass	607.320.03	320mm	328mm	17mm	26mm
Matt Black	607.160.04	160mm	169mm	17mm	26mm
Matt Black	607.320.04	320mm	328mm	17mm	26mm
Matt Gold	607.160.39	160mm	169mm	17mm	26mm
Matt Gold	607.320.39	320mm	328mm	17mm	26mm
Bronze Olive	607.160.50	160mm	169mm	17mm	26mm
Bronze Olive	607.320.50	320mm	328mm	17mm	26mm



MATT GOLD



SORANO HANDLE DETAIL

ROMANO

NEW DESIGN

The Romano, manufactured from Solid Brass, features a linear knurled design inspired by the Roman Forum, the ancient centre of civic life in Rome. It evokes a sense of history and sophistication, while also being modern and functional.



SATIN BRASS

ROMANO KNOB

FINISH	CODE	HC	L	W/D	P/H
Matt Black	237.030.04	–	30mm	30mm	30mm
Dull Brushed Nickel	237.030.10	–	30mm	30mm	30mm
Satin Brass	237.030.35	–	30mm	30mm	30mm
Bronze	237.030.47	–	30mm	30mm	30mm

ROMANO HANDLE

FINISH	CODE	HC	L	W/D	P/H
Matt Black	237.128.04	128mm	168mm	14mm	33mm
Matt Black	237.192.04	192mm	242mm	14mm	33mm
Matt Black	237.256.04	256mm	316mm	14mm	33mm
Dull Brushed Nickel	237.128.10	128mm	168mm	14mm	33mm
Dull Brushed Nickel	237.192.10	192mm	242mm	14mm	33mm
Dull Brushed Nickel	237.256.10	256mm	316mm	14mm	33mm
Satin Brass	237.128.35	128mm	168mm	14mm	33mm
Satin Brass	237.192.35	192mm	242mm	14mm	33mm
Satin Brass	237.256.35	256mm	316mm	14mm	33mm
Bronze	237.128.47	128mm	168mm	14mm	33mm
Bronze	237.192.47	192mm	242mm	14mm	33mm
Bronze	237.256.47	256mm	316mm	14mm	33mm



DULL BRUSHED NICKEL

ROMANO APPLIANCE PULL

BRONZE



ROMANO APPLIANCE PULL HANDLE

FINISH	CODE	HC	L	W/D	P/H
Matt Black	237.352.04	352mm	450mm	20mm	50mm
Dull Brushed Nickel	237.352.10	352mm	450mm	20mm	50mm
Satin Brass	237.352.35	352mm	450mm	20mm	50mm
Bronze	237.352.47	352mm	450mm	20mm	50mm

DECADE

INCREASED RANGE OPTIONS

Made from Solid Brass for a quality look and feel, and a coordinating collection of cup pulls, knobs and handles, Decade will give the perfect finishing touch to your kitchen.

Popular for Hamptons or Shaker style kitchens but will suit all design schemes.

-  DULL BRUSHED NICKEL
-  POLISHED NICKEL
-  SATIN BRASS
-  MATT BLACK



DULL BRUSHED NICKEL

DECADE CUP PULL

FINISH	CODE	HC	L	W/D	P/H
Dull Brushed Nickel	200.076.10	76mm	100mm	27mm	18mm
Polished Nickel	200.076.28	76mm	100mm	27mm	18mm



POLISHED NICKEL

DECADE ROUNDED CUP PULL

FINISH	CODE	HC	L	W/D	P/H
Matt Black	202.076.04	76mm	95mm	23mm	32mm
Dull Brushed Nickel	202.076.10	76mm	95mm	23mm	32mm
Polished Nickel	202.076.28	76mm	95mm	23mm	32mm
Satin Brass	202.076.35	76mm	95mm	23mm	32mm



SATIN BRASS

DECADE LARGE ROUNDED CUP PULL

FINISH	CODE	HC	L	W/D	P/H
Matt Black	203.076.04	76mm	118mm	25mm	36mm
Dull Brushed Nickel	203.076.10	76mm	118mm	25mm	36mm
Polished Nickel	203.076.28	76mm	118mm	25mm	36mm
Satin Brass	203.076.35	76mm	118mm	25mm	36mm



MATT BLACK

DECADE RIDGED HANDLE NEW SIZE - 203MM

FINISH	CODE	HC	L	W/D	P/H
Matt Black	206.102.04	102mm	120mm	19mm	32mm
Matt Black	206.203.04	203mm	222mm	19mm	32mm
Dull Brushed Nickel	206.102.10	102mm	120mm	19mm	32mm
Dull Brushed Nickel	206.203.10	203mm	222mm	19mm	32mm
Polished Nickel	206.102.28	102mm	120mm	19mm	32mm
Polished Nickel	206.203.28	203mm	222mm	19mm	32mm
Satin Brass	206.102.35	102mm	120mm	19mm	32mm
Satin Brass	206.203.35	203mm	222mm	19mm	32mm



SATIN BRASS

DECADE PULL HANDLE

FINISH	CODE	HC	L	W/D	P/H
Matt Black	208.076.04	76mm	87mm	13mm	24mm
Matt Black	208.102.04	102mm	122mm	16mm	30mm
Matt Black	208.152.04	152mm	161mm	16mm	30mm
Dull Brushed Nickel	208.076.10	76mm	87mm	13mm	24mm
Dull Brushed Nickel	208.102.10	102mm	122mm	16mm	30mm
Dull Brushed Nickel	208.152.10	152mm	161mm	16mm	30mm
Polished Nickel	208.076.28	76mm	87mm	13mm	24mm
Polished Nickel	208.102.28	102mm	122mm	16mm	30mm
Polished Nickel	208.152.28	152mm	161mm	16mm	30mm
Satin Brass	208.076.35	76mm	87mm	13mm	24mm
Satin Brass	208.102.35	102mm	122mm	16mm	30mm
Satin Brass	208.152.35	152mm	161mm	16mm	30mm



DULL BRUSHED NICKEL

DECADE PULL HANDLE

FINISH	CODE	HC	L	W/D	P/H
Dull Brushed Nickel	205.102.10	102mm	131mm	25mm	30mm
Polished Nickel	205.102.28	102mm	131mm	25mm	30mm

DECADE APPLIANCE PULL

DULL BRUSHED NICKEL



DECADE APPLIANCE PULL HANDLE

FINISH	CODE	HC	L	W/D	P/H
Matt Black	208.254.04	254mm	270mm	25mm	55mm
Matt Black	208.381.04	381mm	395mm	25mm	55mm
Dull Brushed Nickel	208.254.10	254mm	270mm	25mm	55mm
Dull Brushed Nickel	208.381.10	381mm	395mm	25mm	55mm
Polished Nickel	208.254.28	254mm	270mm	25mm	55mm
Polished Nickel	208.381.28	381mm	395mm	25mm	55mm
Satin Brass	208.254.35	254mm	270mm	25mm	55mm
Satin Brass	208.381.35	381mm	395mm	25mm	55mm



SATIN BRASS

DECADE DOME KNOB

FINISH	CODE	HC	L	W/D	P/H
Matt Black	210.035.04	-	-	35mm	32mm
Dull Brushed Nickel	210.035.10	-	-	35mm	32mm
Polished Nickel	210.035.28	-	-	35mm	32mm
Satin Brass	210.035.35	-	-	35mm	32mm



MATT BLACK

DECADE FLUTED KNOB

FINISH	CODE	HC	L	W/D	P/H
Matt Black	212.032.04	-	-	32mm	32mm
Matt Black	212.038.04	-	-	38mm	38mm
Dull Brushed Nickel	212.032.10	-	-	32mm	32mm
Dull Brushed Nickel	212.038.10	-	-	38mm	38mm
Polished Nickel	212.032.28	-	-	32mm	32mm
Polished Nickel	212.038.28	-	-	38mm	38mm
Satin Brass	212.032.35	-	-	32mm	32mm
Satin Brass	212.038.35	-	-	38mm	38mm



POLISHED NICKEL

DECADE 38MM KNOB AND BACKPLATE

FINISH	CODE	HC	L	W/D	P/H
Matt Black	216.038.04	-	-	38mm	43mm
Dull Brushed Nickel	216.038.10	-	-	38mm	43mm
Polished Nickel	216.038.28	-	-	38mm	43mm
Satin Brass	216.038.35	-	-	38mm	43mm

STIRLING

Stirling is timeless, easy to use and will add a hint of luxury to your cabinets. Made from Solid Brass for added strength and durability.



STIRLING SOLID BRASS 'T' KNOB

FINISH	CODE	HC	L	W/D	P/H
Matt Black	220.050.04	-	50mm	10mm	35mm
Polished Chrome	220.050.06	-	50mm	10mm	35mm
Dull Brushed Nickel	220.050.10	-	50mm	10mm	35mm
Satin Brass	220.050.35	-	50mm	10mm	35mm
Bronze	220.050.47	-	50mm	10mm	35mm

STIRLING SOLID BRASS HANDLE

FINISH	CODE	HC	L	W/D	P/H
Matt Black	220.128.04	128mm	178mm	10mm	35mm
Matt Black	220.192.04	192mm	242mm	10mm	35mm
Polished Chrome	220.128.06	128mm	178mm	10mm	35mm
Polished Chrome	220.192.06	192mm	242mm	10mm	35mm
Dull Brushed Nickel	220.128.10	128mm	178mm	10mm	35mm
Dull Brushed Nickel	220.192.10	192mm	242mm	10mm	35mm
Satin Brass	220.128.35	128mm	178mm	10mm	35mm
Satin Brass	220.192.35	192mm	242mm	10mm	35mm
Bronze	220.128.47	128mm	178mm	10mm	35mm
Bronze	220.192.47	192mm	242mm	10mm	35mm



MATT BLACK



SATIN BRASS

STIRLING APPLIANCE PULL

POLISHED CHROME



STIRLING APPLIANCE PULL HANDLE

FINISH	CODE	HC	L	W/D	P/H
Matt Black	220.352.04	352mm	450mm	18mm	48mm
Polished Chrome	220.352.06	352mm	450mm	18mm	48mm
Dull Brushed Nickel	220.352.10	352mm	450mm	18mm	48mm
Satin Brass	220.352.35	352mm	450mm	18mm	48mm
Bronze	220.352.47	352mm	450mm	18mm	48mm

CHELSEA

NEW DESIGN

Chelsea is a luxury 100% Solid Brass range with knurling detail that is tactile, adds interest, and easy to grip. Perfect for an industrial feel in a contemporary setting.



CHELSEA 50MM 'T' KNOB

FINISH	CODE	HC	L	W/D	P/H
Matt Black	230.050.04	-	50mm	12mm	34mm
Dull Brushed Nickel	230.050.10	-	50mm	12mm	34mm
Satin Brass	230.050.35	-	50mm	12mm	34mm
Bronze	230.050.47	-	50mm	12mm	34mm

CHELSEA HANDLE

FINISH	CODE	HC	L	W/D	P/H
Matt Black	230.128.04	128mm	168mm	12mm	34mm
Matt Black	230.192.04	192mm	252mm	12mm	34mm
Matt Black	230.256.04	256mm	336mm	12mm	34mm
Dull Brushed Nickel	230.128.10	128mm	168mm	12mm	34mm
Dull Brushed Nickel	230.192.10	192mm	252mm	12mm	34mm
Dull Brushed Nickel	230.256.10	256mm	336mm	12mm	34mm
Satin Brass	230.128.35	128mm	168mm	12mm	34mm
Satin Brass	230.192.35	192mm	252mm	12mm	34mm
Satin Brass	230.256.35	256mm	336mm	12mm	34mm
Bronze	230.128.47	128mm	168mm	12mm	34mm
Bronze	230.192.47	192mm	252mm	12mm	34mm
Bronze	230.256.47	256mm	336mm	12mm	34mm



CHELSEA 35MM KNOB

FINISH	CODE	HC	L	W/D	P/H
Matt Black	230.035.04	-	-	35mm	30mm
Dull Brushed Nickel	230.035.10	-	-	35mm	30mm
Satin Brass	230.035.35	-	-	35mm	30mm
Bronze	230.035.47	-	-	35mm	30mm

CHELSEA APPLIANCE PULL

SATIN BRASS



CHELSEA APPLIANCE PULL HANDLE

FINISH	CODE	HC	L	W/D	P/H
Matt Black	230.352.04	352mm	450mm	18mm	48mm
Dull Brushed Nickel	230.352.10	352mm	450mm	18mm	48mm
Satin Brass	230.352.35	352mm	450mm	18mm	48mm
Bronze	230.352.47	352mm	450mm	18mm	48mm

CASTELLA

castella@castella.com.au
castella.com.au
1300 71 71 20



SCAN TO VIEW THE CASTELLA WEBSITE